

U.S. Army Public Health Center

Army Influenza Activity Report

Week ending 18 January 2020 (week 3)

Influenza Vaccination Coverage*

As of 16 January 2020

N/A	DoD
93%	Army Active Duty
86%	Army Guard
77%	Army Reserve

*Data Source: MEDPROS, ASIMS, MRRS

SUMMARY

During week 3, 5,551 specimens were submitted for testing, which represents a 5% decrease from week 2. However, the number of specimens testing positive (n=1252) increased by 18% from week 2. Influenza A accounted for the majority (49%) of positive specimens submitted for testing. PHC-P continues to have the highest percent positive value for influenza A compared to other regions. PHC-C accounted for the majority of positive influenza A specimens; 72% of positive influenza A specimens were among non-AD beneficiaries. Beneficiaries younger than 18 years old accounted for the majority (52%) of total positive respiratory specimens, which was followed by 18-29-year-olds (19%). Two influenza-associated hospitalizations were reported in week 3.

GEOGRAPHIC SPREAD

Click to enlarge image

A Weekly Influenza Surveillance Report Prepared by the Influenza Division
Weekly Influenza Activity Estimates Reported by State and Territorial Epidemiologists*
Week Ending Jan 18, 2020 - Week 3

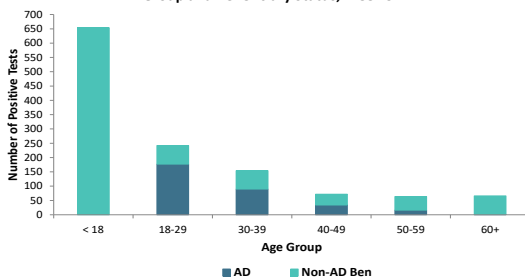


*This map indicates geographic spread and does not measure the severity of influenza activity.

In week 3, widespread activity was reported in Puerto Rico and 48 states. Regional activity was reported in Oregon. Local activity was reported in the District of Columbia and Hawaii. Sporadic activity was reported in the U.S. Virgin Island, and Guam did not report.

DEMOGRAPHICS

Positive Respiratory Specimen Results from Army MTFs by Age Group and Beneficiary Status, Week 3

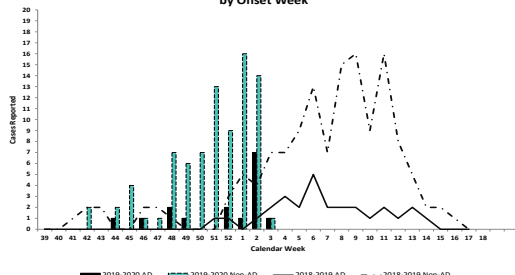


AD: In week 3, 318 positive respiratory specimens in Active Duty Service Members were submitted. The majority of positive specimens were among 18-29-year-olds (n=177, 56%), followed by 30-39 year olds (n=90, 28%).

Non-AD: The majority of positive respiratory specimens in non-Active Duty beneficiaries were collected from individuals younger than 18 years of age (n=654, 70%).

INFLUENZA-ASSOCIATED HOSPITALIZATIONS

Army Influenza-Associated Hospitalizations Reported in DRSi by Onset Week



So far this season, a total of 99 hospitalizations have been reported to DRSi. As of 24 January, two influenza-associated hospitalizations with onset dates in week 3 were reported to DRSi; one hospitalization was due to influenza A and one was due to influenza B. During week 3 last season, nine cases were reported.

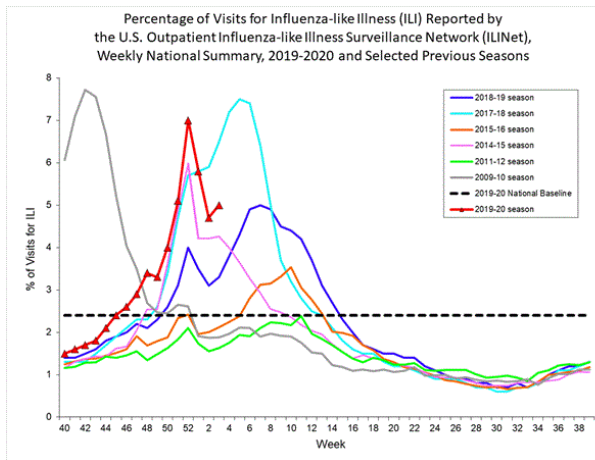
*DRSi does not capture cases older than 65 years old for influenza-associated hospitalizations.

Additional Resources: [APHC Influenza Reports](#), [Centers for Disease Control](#), [Disease Reporting System internet](#), [ESSENCE](#)

Key: ILI-Influenza-Like Illness; DRSi- Disease Reporting System Internet; ADV-Adenovirus; RSV-Respiratory Syncytial Virus; SM-Service Member; MEDPROS- Medical Protection System; ASIMS- Aeromedical Services Information Management System; MRRS- Medical Readiness Reporting System

Questions?
[Email APHC DEP](#)
410-436-7605

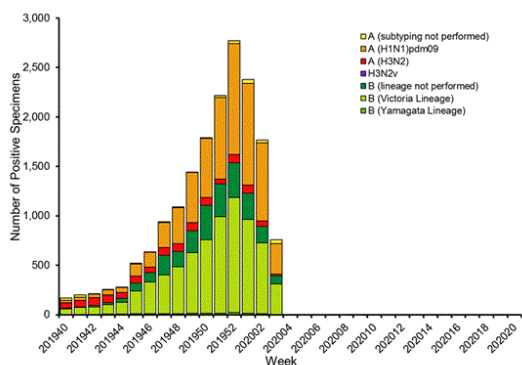
ILI ACTIVITY - UNITED STATES



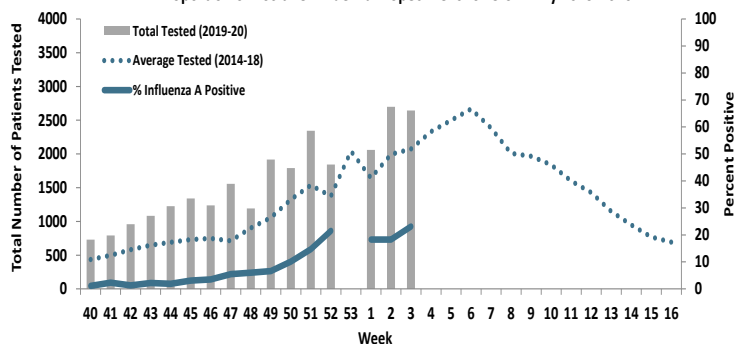
Nationwide in week 3, incident ILI activity was 5.0%. This is above the national baseline of 2.4%. Regionally, the percentage of outpatient visits for ILI ranged from 3.2% to 7.3%. All regions reported a percentage of outpatient visits for ILI above their region-specific baselines.

LABORATORY RESPIRATORY SPECIMEN TESTING

Influenza Positive Tests Reported to CDC by U.S. Public Health Laboratories, National Summary, 2019-2020 Season



Proportion of Positive Influenza A Specimens for U.S. Army 2019-2020



Nationwide, 1,262 specimens were submitted to CDC, of which 60% (n=756) were positive. Influenza A accounted for 48.1% (n=364) of the total positive specimens submitted to the CDC in week 3, while influenza B accounted for 51.9% (n=392). In the Army population, 23.1% of 2,645 specimens tested for influenza A were positive.

		Week 52	Week 1	Week 2	Week 3	Season Total
Test Types Among Positive Influenza A Specimens	RAT	215	178	269	352	1453
	Culture	0	3	2	2	37
	PCR	182	196	224	258	1371
Army MTF Laboratory Results, 2019-20	Influenza A	397	377	495	612	2861
	Influenza B	454	329	424	524	3267
	Adenovirus	8	6	10	16	152
	Enterovirus	0	0	0	0	7
	Parainfluenza	10	6	9	3	186
	RSV	102	96	125	97	1170
	Negative	2985	3642	4737	4259	48218
Total	3956	4456	5800	5511	55861	

Of the 5,511 respiratory specimens tested in week 3, 1,252 (22.7%) were positive for any type of respiratory illness. Influenza A accounted for the majority of positive results in week 3, with 48.9% (n=612) of all positive lab results. This was followed by influenza B, which accounted for 41.8% (n=524) of positive lab results, followed by RSV (7.7%), adenovirus (1.2%), and parainfluenza (0.2%).

Rapid antigen tests represented 57.5% of the influenza A tests ordered, followed by PCR tests (42.2%), then cultures (<1%).

Locations providing week 3 laboratory data as of 23 January 2020: Ft. Belvoir, Ft Benning, Ft Bliss, Ft Bragg, Ft Campbell, Ft Carson, Ft Drum, Ft Gordon, Ft Hood, Ft Huachuca, Ft Irwin, Ft Jackson, Ft Knox, Ft Leavenworth, Ft Lee, Ft Leonard Wood, Ft Meade, Ft Riley, Ft Rucker, Ft Sam Houston, Ft Stewart, Ft. Wainwright, Korea, Landstuhl Regional Medical Center, Redstone Arsenal, Tripler Army Medical Center, the U.S. Military Academy, and Walter Reed National Military Medical Center.

*NOTE: Madigan AMC data is also received weekly, but cannot be included at this time due to reporting limitations from MHS Genesis.

LABORATORY RESPIRATORY SPECIMEN TESTING

Region	Installation	Influenza A			Influenza B			Adenovirus		
		No. Tested	% Positive	Baseline % Positive	No. Tested	% Positive	Baseline % Positive	No. Tested	% Positive	Baseline % Positive
PHCA	Ft. Belvoir	333	14.4	15.2	200	28.5	0	80	15	4.3
	Ft. Benning	200	18.5	22.4	200	13	0			
	Ft. Bragg	140	21.4	20			100			
	Ft. Campbell	161	13	10.2	161	11.8	0			100
	Ft. Drum	15	6.7	16.7	6	100	100			
	Ft. Eustis			20.8						
	Ft. Gordon	87	19.5	16	84	6	0			100
	Ft. Jackson	81	11.1	10.3	82	11	1.7			
	Ft. Knox	13	15.4	38.5	13	0	0			
	Ft. Lee	43	16.3	13.3	10	100	100			
	Ft. Meade	27	40.7	100						
	Ft. Rucker	22	13.6	0	22	9.1	0			
	Ft. Sam Houston	402	24.4	16.9	404	16.6	3.5			100
	Ft. Stewart	107	22.4	19.6	106	6.6	0			
	Redstone Arsenal	22	9.1	0	22	27.3	0			
West Point Military Academy	35	28.6	31.3	2	0	0			100	
PHCC	Ft. Bliss	539	18.2	16.9	521	34	0			2.3
	Ft. Carson	149	8.1	19.9			100			
	Ft. Hood	173	19.7	18	172	6.4	0.7	20	0	0
	Ft. Huachuca	21	23.8	13.3	22	18.2	11.1			
	Ft. Irwin	55	14.5	47.6	55	7.3	2.4			
	Ft. Leavenworth	26	19.2	12.7	26	3.8	1.8			
	Ft. Leonard Wood	106	4.7	3	107	30.8	0			100
	Ft. Polk	9	11.1	5.7	3	100	100			
	Ft. Riley			10.4			0			
	Ft. Sill	112	30.4	7.1	36	100	100			
PHCE	Landstuhl Regional Medical Center	40	20	21	32	3.1	0	32	3.1	4.7
PHCP	Ft. Wainwright	61	3.3	12.1	62	43.5	0			
	Korea	132	41.7	29.2	76	0	0	76	3.9	0
	Tripler Army Medical Center	112	22.3	9.9	114	11.4	0	6	0	2.4
Region	Installation	Enterovirus			Parainfluenza			RSV		
		No. Tested	% Positive	Baseline % Pos.	No. Tested	% Positive	Baseline % Pos.	No. Tested	% Positive	Baseline % Pos.
PHCA	Ft. Belvoir				81	1.2	1.4	194	12.4	17.9
	Ft. Campbell						100			100
	Ft. Drum							2	100	33.3
	Ft. Gordon						100			100
	Ft. Sam Houston						100			100
	Ft. Stewart							15	20	12.5
	West Point Military Academy						100			100
PHCC	Ft. Bliss							506	8.9	11
	Ft. Carson							21	19	35.4
	Ft. Hood				21	4.8	0	43	14	12.7
	Ft. Leavenworth							3	0	25
	Ft. Leonard Wood						100			
	Ft. Polk							1	0	14.3
	Ft. Riley									23.1
	Ft. Sill					100			50	
PHCE	Landstuhl Regional Medical Center				32	0	3	46	17.4	12.3
PHCP	Ft. Wainwright							61	0	12.5
	Korea			0	76	1.3	2.9	76	6.6	17.6
	Tripler Army Medical Center	6	0	0	6	0	2.4			100

No.: Number of specimens tested during MMWR week 3 2020.

% Pos.: Percentage of positive specimens reported during MMWR week 3 2020.

Baseline % Pos.: Percentage of positive specimens reported in MMWR week 3 during influenza seasons from September 2012 - May 2019.

Missing values indicate that specimens were not tested for the disease during the week of interest.

A Weekly Influenza Surveillance Report Prepared by the Influenza Division

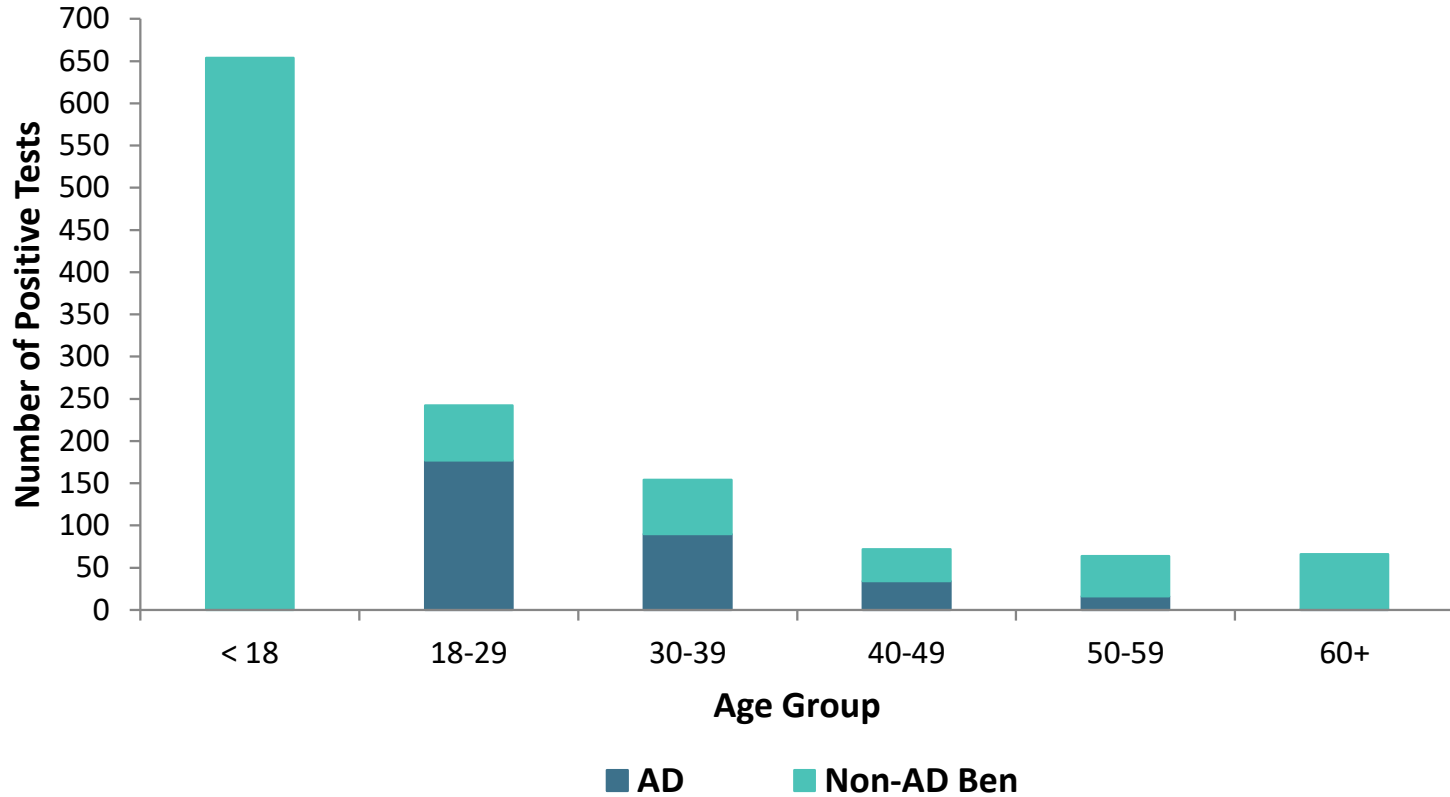
Weekly Influenza Activity Estimates Reported by State and Territorial Epidemiologists*

Week Ending Jan 18, 2020 - Week 3



*This map indicates geographic spread and does not measure the severity of influenza activity.

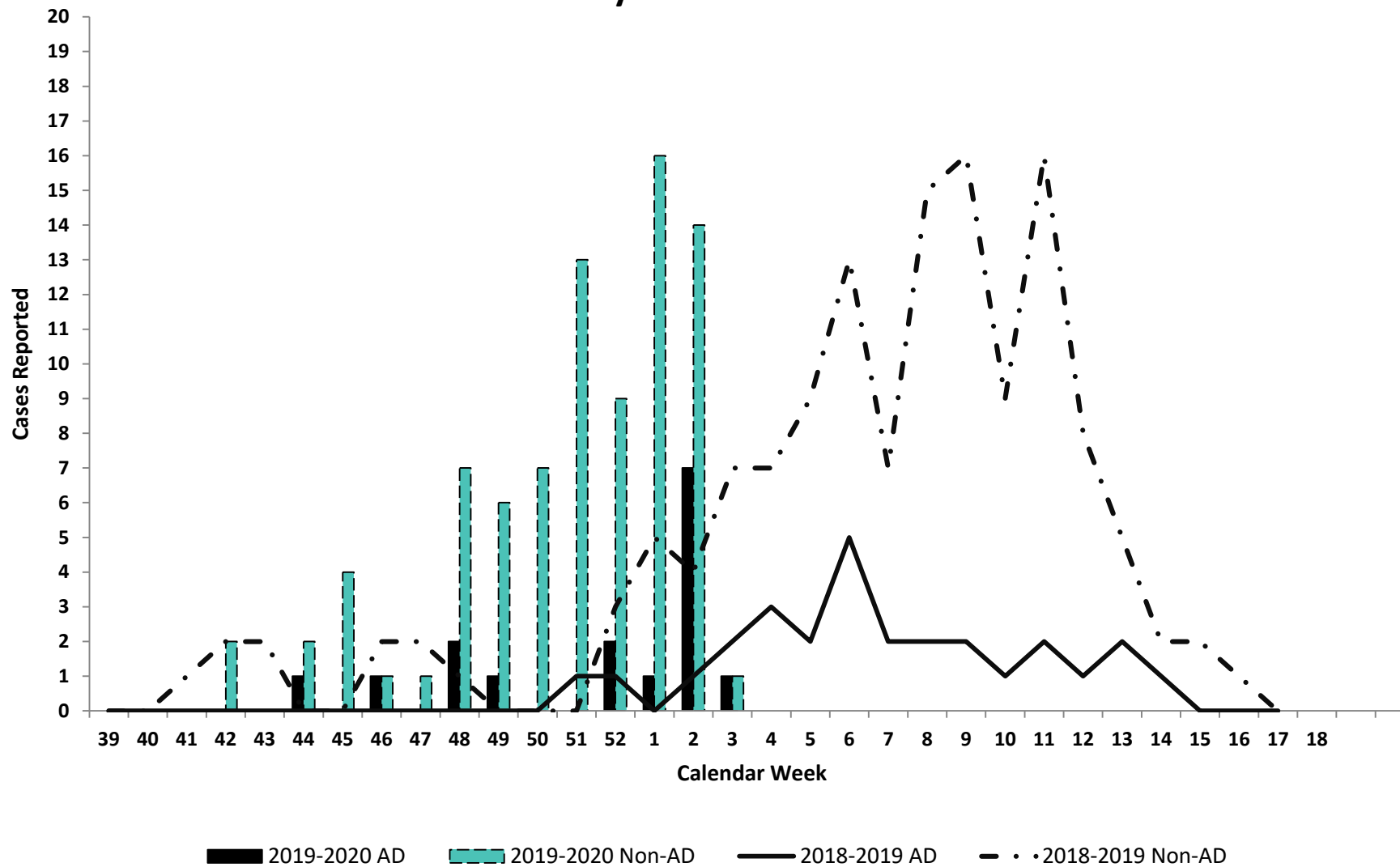
Positive Respiratory Specimen Results from Army MTFs by Age Group and Beneficiary Status, Week 3



Week 3			
Age Group	AD	Non-AD Ben	Season Total
< 18	0	654	4371
18-29	177	65	1264
30-39	90	64	837
40-49	34	38	437
50-59	16	48	353
60+	1	65	379
Total	318	934	7641

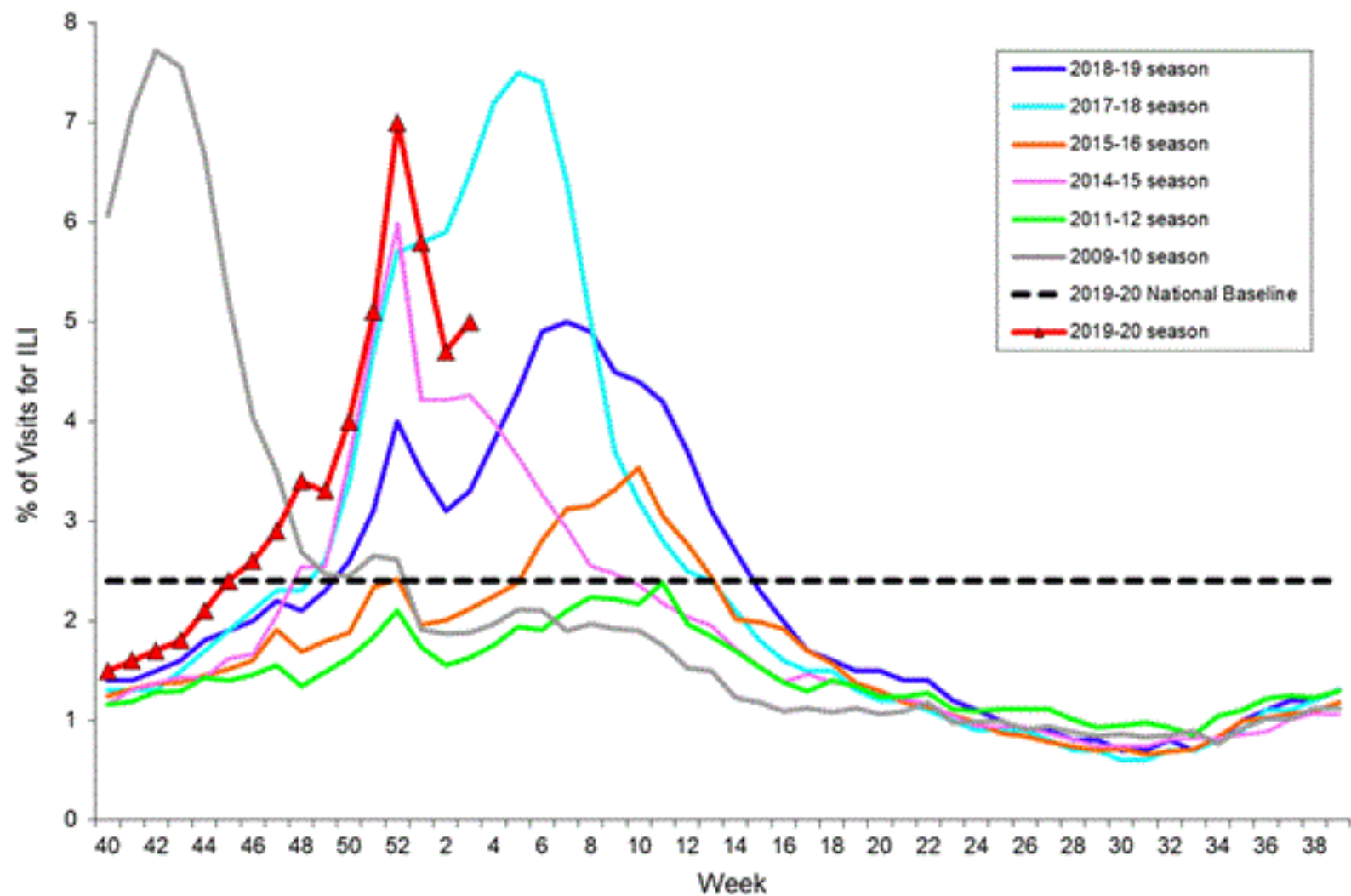


Army Influenza-Associated Hospitalizations Reported in DRSi by Onset Week

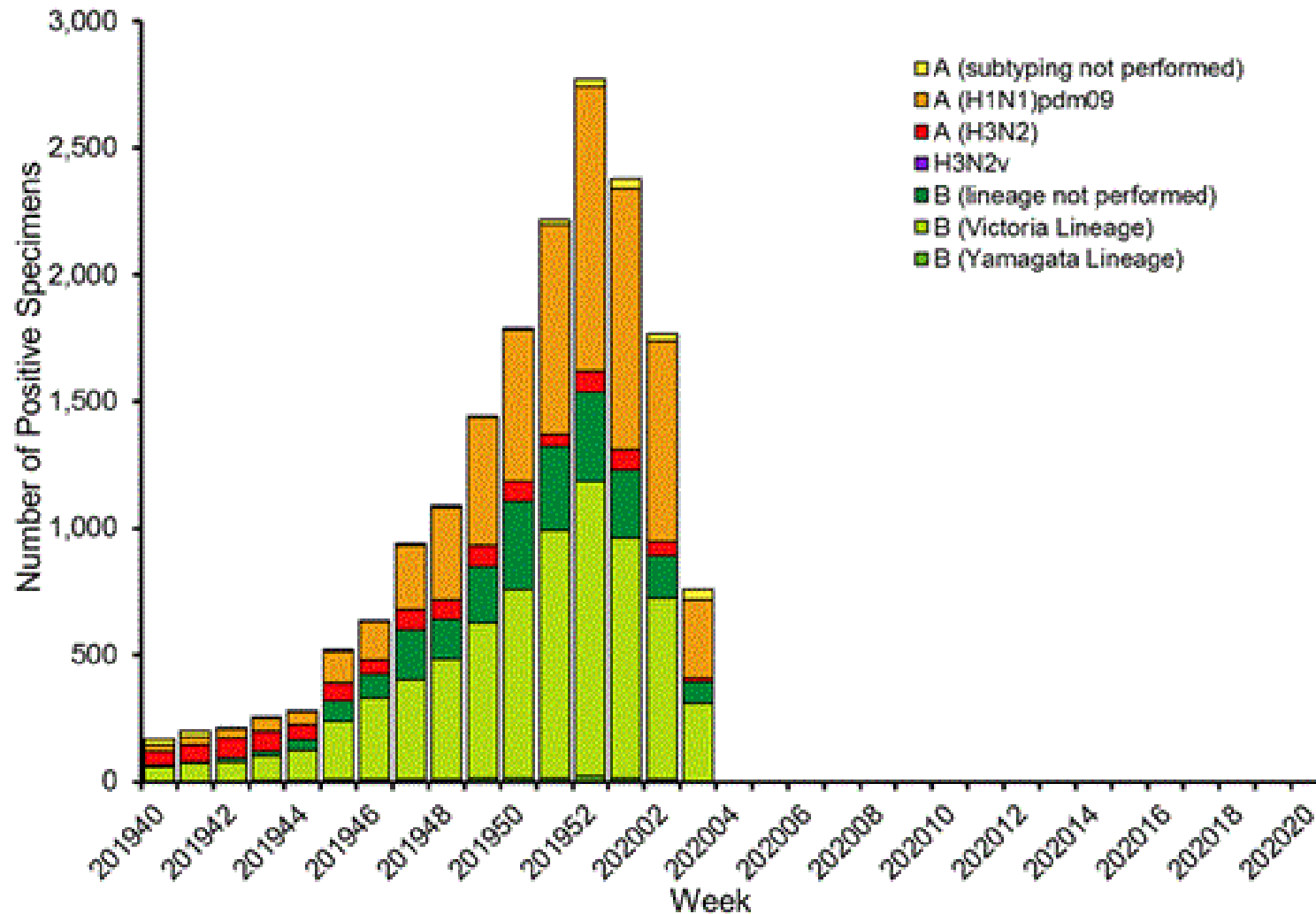


Note: Reportable influenza cases are defined as only cases that have been hospitalized and are under the age of 65.
Data as of 14 January 2020.

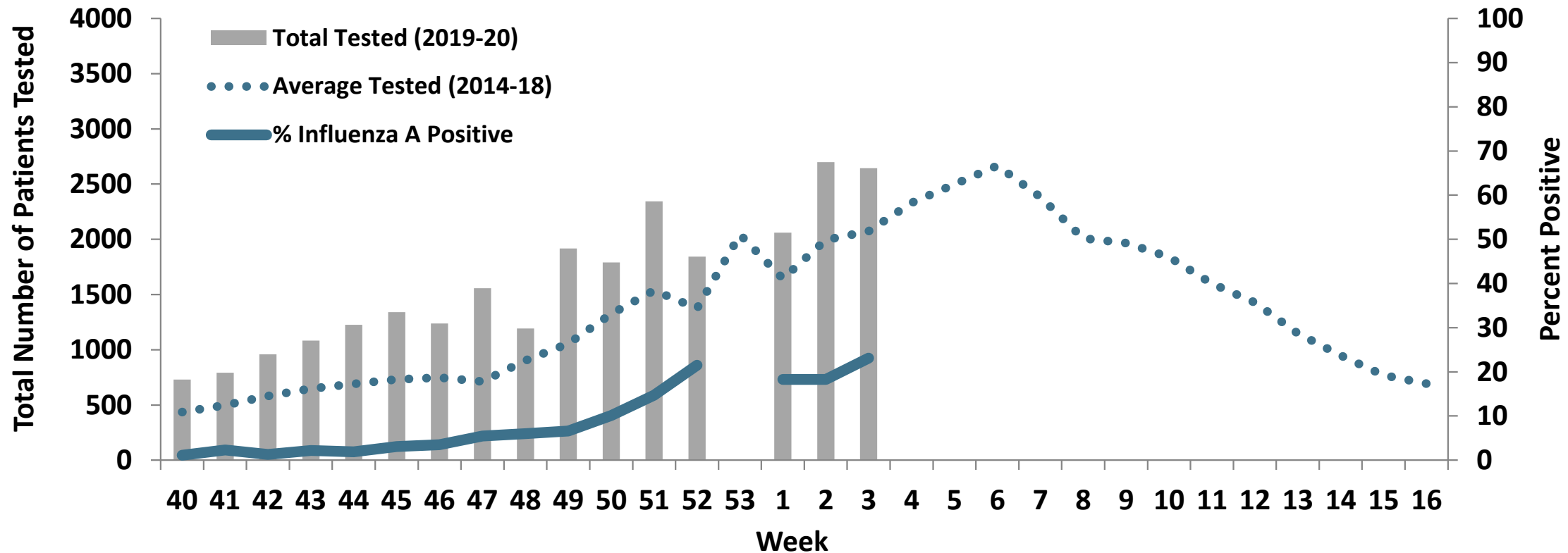
Percentage of Visits for Influenza-like Illness (ILI) Reported by the U.S. Outpatient Influenza-like Illness Surveillance Network (ILINet), Weekly National Summary, 2019-2020 and Selected Previous Seasons



Influenza Positive Tests Reported to CDC by U.S. Public Health Laboratories, National Summary, 2019-2020 Season



Proportion of Positive Influenza A Specimens for U.S. Army 2019-2020



Laboratory Respiratory Specimen Testing: Weeks 52 – 3

		Week 52	Week 1	Week 2	Week 3	Season Total
Test Types Among Positive Influenza A Specimens	RAT	215	178	269	352	1453
	Culture	0	3	2	2	37
	PCR	182	196	224	258	1371
Army MTF Laboratory Results, 2019-20	Influenza A	397	377	495	612	2861
	Influenza B	454	329	424	524	3267
	Adenovirus	8	6	10	16	152
	Enterovirus	0	0	0	0	7
	Parainfluenza	10	6	9	3	186
	RSV	102	96	125	97	1170
	Negative	2985	3642	4737	4259	48218
	Total	3956	4456	5800	5511	55861

